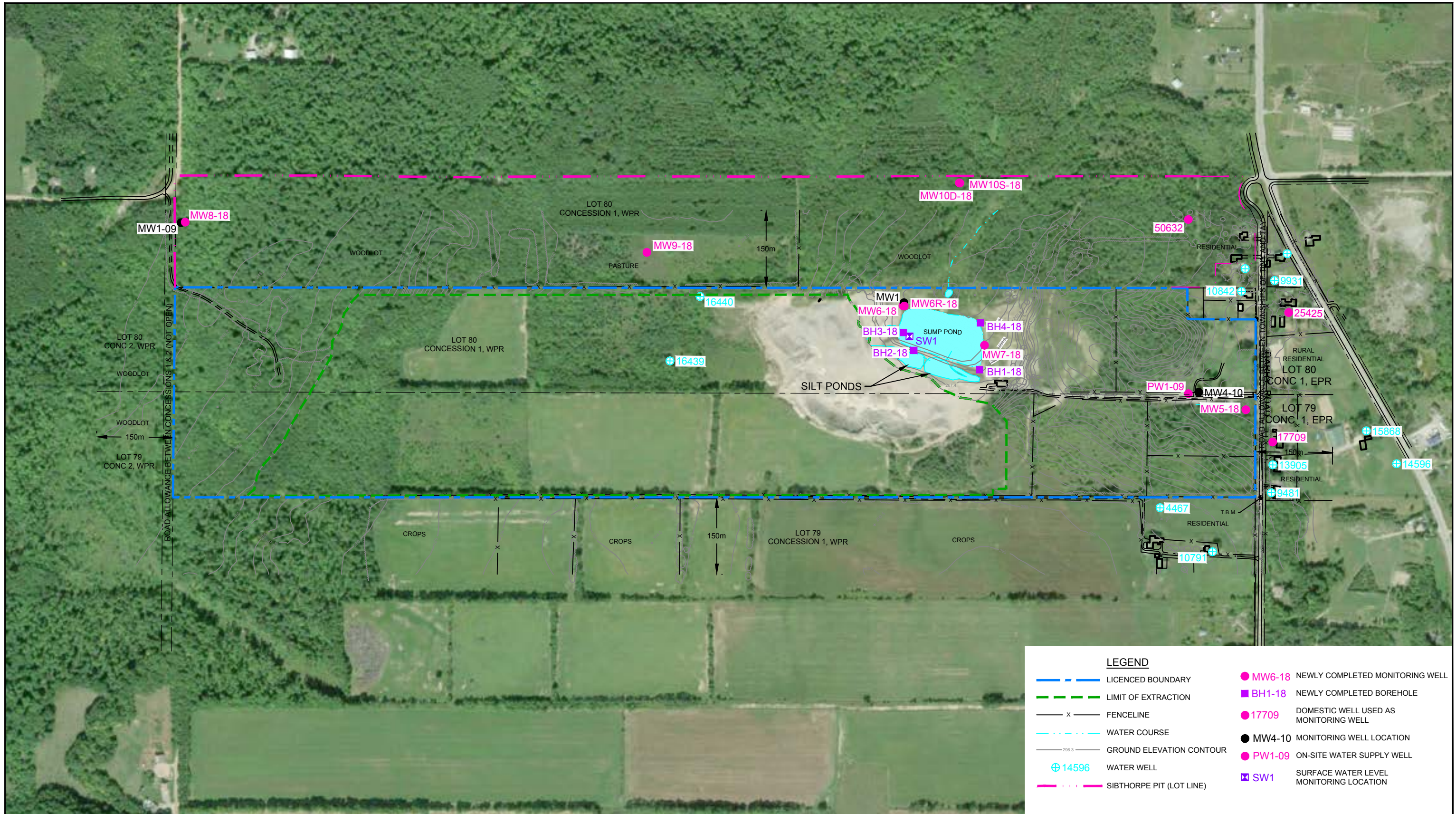
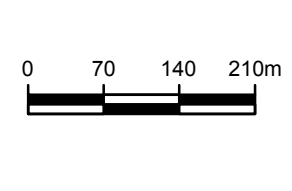


2018 Monitoring Well
Stratigraphic and Instrumentation Logs
Dufferin Teedon Pit



Source: Microsoft Product Screen shot Reprinted with permission from Microsoft Corporation, Aquisition Date 2018, Accessed April, 2018



DUFFERIN TEEDON PIT
TOWNSHIP OF TINY, COUNTY OF SIMCOE, ONTARIO

2018 MONITORING WELL LOCATIONS

11155365-10
Oct 30, 2018

FIGURE 1



STRATIGRAPHIC AND INSTRUMENTATION LOG (OVERBURDEN)

PROJECT NAME: CRH-TEEDON PIT
 PROJECT NUMBER: 11155365
 CLIENT: CRH CANADA GROUP INC
 LOCATION: TINY TOWNSHIP, ONTARIO

HOLE DESIGNATION: MW5-18
 DATE COMPLETED: 5 April 2018
 DRILLING METHOD: SONIC
 FIELD PERSONNEL: K. VANDER MEULEN

| DEPTH m BGS | STRATIGRAPHIC DESCRIPTION & REMARKS | ELEV. m | MONITORING WELL | SAMPLE | | | |
|----------------|---|--|----------------------|--------|----------|---------|--|
| | | | | NUMBER | INTERVAL | REC (%) | |
| | NORTHING: 4945106.2 EASTING: 592450.79 | TOP OF RISER GROUND SURFACE 257.19 256.39 | | | | | |
| 2 | TOPSOIL | 256.08 | CONCRETE | 1RS | | 71 | |
| | ML-SILT, some clay, loose, brown, oxidized, wet | 254.86 | BENTONITE GROUT | | | | |
| | SM-SILTY SAND, compact, very fine grained, dilatant, poorly graded, brown, wet | 254.10 | | 2RS | | 100 | |
| 4 | SP-SAND, with silt, trace gravel, compact, very fine grained, poorly graded, brown, wet | 251.82 | 51mm PVC WELL CASING | | | | |
| 6 | SM-SILTY SAND, trace clay, compact, very fine grained, slightly dilatant, poorly graded, brown, wet | | 152mm BOREHOLE | 3RS | | 100 | |
| 8 | | | | | | | |
| 10 | ML-SILT, with very fine sand, compact, dilatant, brown, wet | 247.55 | | 4RS | | 100 | |
| 12 | SP-SAND, trace silt, compact, fine grained, poorly graded, brown, wet | 246.33 | | 5RS | | 100 | |
| 14 | | | | | | | |
| 16 | SM-SILTY SAND (Till), with gravel, trace clay, compact, very fine grained, poorly graded, grey, very moist to wet | 241.45 | | 6RS | | 100 | |
| 18 | ML-SILT, trace clay, compact, dilatant, grey, wet | 239.01 | | 7RS | | 100 | |
| 20 | - with clay at 18.90m BGS | | | | | | |
| 22 | | | | 8RS | | 100 | |
| 24 | | | | | | | |
| 26 | - with clay at 24.99m BGS | | | 9RS | | 100 | |
| 28 | CL-SILTY CLAY, stiff, low plasticity, slightly dilatant, grey, wet | 229.87 | | 10RS | | 100 | |
| 30 | | | | 11RS | | 100 | |
| 32 | | | | | | | |
| 34 | | | | 12RS | | 100 | |
| 36 | | | | | | | |
| 38 | - medium plasticity at 38.10m BGS | | | 13RS | | 100 | |
| 40 | | | | 14RS | | 100 | |

NOTES: MEASURING POINT ELEVATIONS MAY CHANGE; REFER TO CURRENT ELEVATION TABLE

OVERBURDEN LOG 11155365-WI.GPJ GHD_Corp 15/6/18



STRATIGRAPHIC AND INSTRUMENTATION LOG (OVERBURDEN)

PROJECT NAME: CRH-TEEDON PIT
 PROJECT NUMBER: 11155365
 CLIENT: CRH CANADA GROUP INC
 LOCATION: TINY TOWNSHIP, ONTARIO

HOLE DESIGNATION: MW5-18
 DATE COMPLETED: 5 April 2018
 DRILLING METHOD: SONIC
 FIELD PERSONNEL: K. VANDER MEULEN

| DEPTH m BGS | STRATIGRAPHIC DESCRIPTION & REMARKS | ELEV. m | MONITORING WELL | SAMPLE | | | |
|----------------|---|------------|--|--------|----------|---------|--|
| | | | | NUMBER | INTERVAL | REC (%) | |
| 42 | | | | | | | |
| 44 | - 51mm medium sand seam at 44.20m BGS | | | 15RS | | 100 | |
| 46 | | | | 16RS | | 100 | |
| 48 | | | | 17RS | | 100 | |
| 50 | | | | | | | |
| 52 | SP-SAND, compact, very fine grained, poorly graded, grey, wet | 204.42 | | 18RS | | 100 | |
| 54 | | | | 19RS | | 100 | |
| 56 | | | | 20RS | | 100 | |
| 58 | | | | 21RS | | 100 | |
| 60 | - fine grained at 60.05m BGS | | | 22RS | | 100 | |
| 62 | | | | 23RS | | 100 | |
| 64 | | | | | | | |
| 66 | - trace gravel, trace to with silt at 65.53m BGS | | | | | | |
| 68 | | | | | | | |
| 70 | END OF BOREHOLE @ 69.19m BGS | 186.59 | <p style="font-size: small;">BENTONITE PELLETS SAND PACK 51mm PVC WELL SCREEN</p> | | | | |
| 72 | | | <p>WELL DETAILS</p> <p>Screened interval: 189.64 to 186.59m 66.75 to 69.80m BGS</p> <p>Length: 3.05m Diameter: 51mm Slot Size: 0.010 Material: PVC SCH 80</p> <p>Seal: 190.86 to 190.25m 65.53 to 66.14m BGS Material: BENTONITE PELLETS</p> <p>Sand Pack: 190.25 to 186.59m 66.14 to 69.80m BGS Material: SAND</p> | | | | |
| 74 | | | | | | | |
| 76 | | | | | | | |
| 78 | | | | | | | |
| 80 | | | | | | | |

NOTES: MEASURING POINT ELEVATIONS MAY CHANGE; REFER TO CURRENT ELEVATION TABLE

OVERBURDEN LOG 11155365-WI.GPJ GHD_Corp 15/6/18



STRATIGRAPHIC AND INSTRUMENTATION LOG (OVERBURDEN)

PROJECT NAME: CRH-TEEDON PIT
 PROJECT NUMBER: 11155365
 CLIENT: CRH CANADA GROUP INC
 LOCATION: TINY TOWNSHIP, ONTARIO

HOLE DESIGNATION: MW6-18
 DATE COMPLETED: 29 March 2018
 DRILLING METHOD: SONIC
 FIELD PERSONNEL: K. VANDER MEULEN

| DEPTH m BGS | STRATIGRAPHIC DESCRIPTION & REMARKS | ELEV. m | MONITORING WELL | SAMPLE | | | |
|----------------|--|--------------------------------|----------------------|--------|----------|---------|--|
| | | | | NUMBER | INTERVAL | REC (%) | |
| | NORTHING: 4944916.15 EASTING: 591778.54 | TOP OF RISER GROUND SURFACE | 268.43 267.60 | | | | |
| 2 | SM-SILTY SAND (FILL), little gravel, compact, very fine grained, poorly graded, brown, moist | | CONCRETE | 1RS | | 60 | |
| 4 | ML-SILT, trace clay, trace very fine sand, compact, brown, moist - no clay or sand at 3.66m BGS - dilatant, wet at 6.10m BGS | 264.86 | BENTONITE GROUT | 2RS | | 100 | |
| 6 | | | 51mm PVC WELL CASING | 3RS | | 100 | |
| 8 | | | 152mm BOREHOLE | 4RS | | 100 | |
| 10 | | | | 5RS | | 100 | |
| 12 | SM-SILTY SAND, compact, very fine grained, poorly graded, brown, wet | 256.02 | | 6RS | | 100 | |
| 14 | ML-SILT, trace clay, compact, dilatant, grey, wet | 255.10 | | 7RS | | 100 | |
| 16 | - with clay, very moist to wet at 16.76m BGS | | | 8RS | | 100 | |
| 18 | - trace clay at 17.98m BGS | | | 9RS | | 100 | |
| 20 | - with clay at 20.42m BGS | | | 10RS | | 100 | |
| 22 | | | | 11RS | | 100 | |
| 24 | | | | 12RS | | 100 | |
| 26 | CL-SILTY CLAY, stiff, low plasticity, grey, wet - medium plasticity at 25.91m BGS | 242.30 | | 13RS | | 100 | |
| 28 | | | | 14RS | | 100 | |
| 30 | | | | | | | |
| 32 | | | | | | | |
| 34 | SP-SAND, with coarse gravel, compact, medium grained, poorly graded, grey, wet - trace gravel, fine grained at 33.83m BGS | 234.38 | | | | | |
| 36 | | | | | | | |
| 38 | | | | | | | |
| 40 | - trace silt, very fine grained at 39.62m BGS | | | | | | |

NOTES: MEASURING POINT ELEVATIONS MAY CHANGE; REFER TO CURRENT ELEVATION TABLE

OVERBURDEN LOG 11155365-WI.GPJ GHD_Corp 15/6/18



STRATIGRAPHIC AND INSTRUMENTATION LOG (OVERBURDEN)

PROJECT NAME: CRH-TEEDON PIT
 PROJECT NUMBER: 11155365
 CLIENT: CRH CANADA GROUP INC
 LOCATION: TINY TOWNSHIP, ONTARIO

HOLE DESIGNATION: MW6-18
 DATE COMPLETED: 29 March 2018
 DRILLING METHOD: SONIC
 FIELD PERSONNEL: K. VANDER MEULEN

| DEPTH m BGS | STRATIGRAPHIC DESCRIPTION & REMARKS | ELEV. m | MONITORING WELL | SAMPLE | | | | |
|----------------|--|------------|---|--------|----------|---------|--|--|
| | | | | NUMBER | INTERVAL | REC (%) | | |
| 42 | | 224.93 | <p style="font-size: small; margin-top: 10px;">WELL DETAILS Screened interval: 201.15 to 198.11m 66.45 to 69.49m BGS Length: 3.05m Diameter: 51mm Slot Size: 0.010 Material: PVC SCH 80 Seal: 202.37 to 201.76m 65.23 to 65.84m BGS Material: BENTONITE PELLETS Sand Pack: 201.76 to 197.50m 65.84 to 70.10m BGS Material: SAND</p> | 15RS | | 100 | | |
| | ML-SILT, dense, dilatant, grey, wet | 224.17 | | 16RS | | 100 | | |
| 44 | SP-SAND, trace silt, compact, very fine grained, poorly graded, grey, wet | | | 17RS | | 100 | | |
| 46 | | | | 18RS | | 100 | | |
| 48 | | | | 19RS | | 100 | | |
| 50 | | | | 20RS | | 100 | | |
| 52 | ML-SILT, compact, dilatant, grey, wet | 215.78 | | 21RS | | 100 | | |
| 54 | | | | 22RS | | 100 | | |
| 56 | SP-SAND, trace silt, compact, very fine grained, poorly graded, grey, wet, dark layering | 212.13 | | 23RS | | 100 | | |
| 58 | | | | 24RS | | 100 | | |
| 60 | | | | | | | | |
| 62 | - fine grained, grey at 61.87m BGS - fine grained, brown at 62.79m BGS | | | | | | | |
| 64 | | | | | | | | |
| 66 | | | | | | | | |
| 68 | | | | | | | | |
| 70 | END OF BOREHOLE @ 70.10m BGS | 197.50 | | | | | | |
| 72 | | | | | | | | |
| 74 | | | | | | | | |
| 76 | | | | | | | | |
| 78 | | | | | | | | |
| 80 | | | | | | | | |

NOTES: MEASURING POINT ELEVATIONS MAY CHANGE; REFER TO CURRENT ELEVATION TABLE

OVERBURDEN LOG 11155365-WI.GPJ GHD_Corp 15/6/18



STRATIGRAPHIC AND INSTRUMENTATION LOG (OVERBURDEN)

PROJECT NAME: CRH-TEEDON PIT
 PROJECT NUMBER: 11155365
 CLIENT: CRH CANADA GROUP INC
 LOCATION: TINY TOWNSHIP, ONTARIO

HOLE DESIGNATION: MW6R-18
 DATE COMPLETED: October 2, 2018
 DRILLING METHOD: SONIC
 FIELD PERSONNEL: G. LAGOS

| DEPTH m BGS | STRATIGRAPHIC DESCRIPTION & REMARKS | ELEV. m | MONITORING WELL | SAMPLE | | | | |
|----------------|--|--|----------------------|--------|----------|---------|--|--|
| | | | | NUMBER | INTERVAL | REC (%) | | |
| | NORTHING: 4944916.96 EASTING: 591780.6 | TOP OF RISER GROUND SURFACE 268.20 267.57 | | | | | | |
| 2 | SM-SILTY SAND (FILL), little gravel, compact, very fine grained, poorly graded, brown, moist | | CONCRETE | | | | | |
| 4 | ML-SILT, trace clay, trace very fine sand, compact, brown, moist - no clay or sand at 3.66m BGS - dilatant, wet at 6.10m BGS | 264.82 | BENTONITE GROUT | | | | | |
| 6 | | | 51mm PVC WELL CASING | | | | | |
| 8 | | | 152mm BOREHOLE | | | | | |
| 10 | | | | | | | | |
| 12 | SM-SILTY SAND, compact, very fine grained, poorly graded, brown, wet | 255.99 255.07 | | | | | | |
| 14 | ML-SILT, trace clay, compact, dilatant, grey, wet | | | | | | | |
| 16 | - with clay, very moist to wet at 16.76m BGS | | | | | | | |
| 18 | - trace clay at 17.98m BGS | | | | | | | |
| 20 | - with clay at 20.42m BGS | | | | | | | |
| 22 | | | | | | | | |
| 24 | | | | | | | | |
| 26 | CL-SILTY CLAY, stiff, low plasticity, grey, wet - medium plasticity at 25.91m BGS | 242.27 | | | | | | |
| 28 | | | | | | | | |
| 30 | | | | | | | | |
| 32 | | | | | | | | |
| 34 | SP-SAND, with coarse gravel, compact, medium grained, poorly graded, grey, wet - trace gravel, fine grained at 33.83m BGS | 234.34 | | | | | | |
| 36 | | | | | | | | |
| 38 | | | | | | | | |
| 40 | - trace silt, very fine grained at 39.62m BGS | | | | | | | |

NOTES: MEASURING POINT ELEVATIONS MAY CHANGE; REFER TO CURRENT ELEVATION TABLE

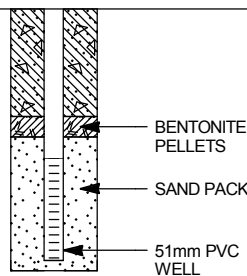
OVERBURDEN LOG 11155365-WI.GPJ GHD_Corp 10/23/18



STRATIGRAPHIC AND INSTRUMENTATION LOG (OVERBURDEN)

PROJECT NAME: CRH-TEEDON PIT
 PROJECT NUMBER: 11155365
 CLIENT: CRH CANADA GROUP INC
 LOCATION: TINY TOWNSHIP, ONTARIO

HOLE DESIGNATION: MW6R-18
 DATE COMPLETED: October 2, 2018
 DRILLING METHOD: SONIC
 FIELD PERSONNEL: G. LAGOS

| DEPTH m BGS | STRATIGRAPHIC DESCRIPTION & REMARKS | ELEV. m | MONITORING WELL | SAMPLE | | | | |
|----------------|---|------------|---|--------|----------|---------|--|--|
| | | | | NUMBER | INTERVAL | REC (%) | | |
| 42 | | 224.90 |  <p style="font-size: small; margin-top: 10px;"> WELL DETAILS Screened interval: 222.15 to 219.10m 45.42 to 48.46m BGS Length: 3.05m Diameter: 51mm Slot Size: 0.010 Material: PVC Seal: 223.37 to 222.76m 44.20 to 44.81m BGS Material: BENTONITE PELLETS Sand Pack: 222.76 to 218.80m 44.81 to 48.77m BGS Material: SAND </p> | | | | | |
| | ML-SILT, dense, dilatant, grey, wet | 224.13 | | | | | | |
| 44 | SP-SAND, trace silt, compact, very fine grained, poorly graded, grey, wet | | | | | | | |
| 46 | | | | | | | | |
| 48 | END OF BOREHOLE @ 48.77m BGS | 218.80 | | | | | | |
| 50 | | | | | | | | |
| 52 | | | | | | | | |
| 54 | | | | | | | | |
| 56 | | | | | | | | |
| 58 | | | | | | | | |
| 60 | | | | | | | | |
| 62 | | | | | | | | |
| 64 | | | | | | | | |
| 66 | | | | | | | | |
| 68 | | | | | | | | |
| 70 | | | | | | | | |
| 72 | | | | | | | | |
| 74 | | | | | | | | |
| 76 | | | | | | | | |
| 78 | | | | | | | | |
| 80 | | | | | | | | |

NOTES: MEASURING POINT ELEVATIONS MAY CHANGE; REFER TO CURRENT ELEVATION TABLE

OVERBURDEN LOG 11155365-WI.GPJ GHD_Corp 10/23/18



STRATIGRAPHIC AND INSTRUMENTATION LOG (OVERBURDEN)

PROJECT NAME: CRH-TEEDON PIT
 PROJECT NUMBER: 11155365
 CLIENT: CRH CANADA GROUP INC
 LOCATION: TINY TOWNSHIP, ONTARIO

HOLE DESIGNATION: MW7-18
 DATE COMPLETED: 9 April 2018
 DRILLING METHOD: SONIC
 FIELD PERSONNEL: K. VANDER MEULEN

| DEPTH m BGS | STRATIGRAPHIC DESCRIPTION & REMARKS | ELEV. m | MONITORING WELL | SAMPLE | | | |
|----------------|--|--|---|--------|----------|---------|--|
| | | | | NUMBER | INTERVAL | REC (%) | |
| | NORTHING: 4944937.13 EASTING: 591953.92 | TOP OF RISER GROUND SURFACE 267.56 266.83 | | | | | |
| 2 | SP-SAND (FILL), with silt, compact, very fine grained, poorly graded, brown, moist | | <p>WELL DETAILS Screened interval: 247.94 to 244.89m 18.90 to 21.95m BGS Length: 3.05m Diameter: 51mm Slot Size: 0.010 Material: PVC SCH 80 Seal: 249.16 to 248.55m 17.68 to 18.29m BGS Material: BENTONITE PELLETS Sand Pack: 248.55 to 242.75m 18.29 to 24.08m BGS Material: SAND</p> | 1RS | | 67 | |
| 4 | SM-SILTY SAND, loose, very fine grained, poorly graded, dilatant, brown, wet | 262.57 | | 2RS | | 60 | |
| 6 | | | | 3RS | | 100 | |
| 8 | ML-SILT, trace very fine sand, loose, dilatant, grey, wet | 258.91 | | 4RS | | 100 | |
| 10 | | | | 5RS | | 100 | |
| 14 | SM-SILTY SAND, compact, very fine grained, slightly dilatant, poorly graded, grey, wet | 253.42 | | 6RS | | 100 | |
| 16 | ML-SILT, compact, dilatant, grey, wet - trace to with clay at 15.85m BGS | 252.51 | | 7RS | | 100 | |
| 18 | | | | 8RS | | 100 | |
| 20 | SM-SILTY SAND, compact, very fine grained, slightly dilatant, poorly graded, grey, wet | 247.63 | | | | | |
| 22 | ML-SILT, with clay, compact, grey, wet | 244.89 | | | | | |
| 24 | END OF BOREHOLE @ 24.08m BGS | 242.75 | | | | | |
| 26 | | | | | | | |
| 28 | | | | | | | |
| 30 | | | | | | | |
| 32 | | | | | | | |
| 34 | | | | | | | |
| 36 | | | | | | | |
| 38 | | | | | | | |
| 40 | | | | | | | |

NOTES: MEASURING POINT ELEVATIONS MAY CHANGE; REFER TO CURRENT ELEVATION TABLE

OVERBURDEN LOG 11155365-WI.GPJ GHD_Corp 15/6/18



STRATIGRAPHIC AND INSTRUMENTATION LOG (OVERBURDEN)

PROJECT NAME: CRH-TEEDON PIT
 PROJECT NUMBER: 11155365
 CLIENT: CRH CANADA GROUP INC
 LOCATION: TINY TOWNSHIP, ONTARIO

HOLE DESIGNATION: MW8-18
 DATE COMPLETED: 11 June 2018
 DRILLING METHOD: SONIC
 FIELD PERSONNEL: S. MOLONEY

| DEPTH m BGS | STRATIGRAPHIC DESCRIPTION & REMARKS | ELEV. m | MONITORING WELL | SAMPLE | | | | | |
|----------------|--|--|----------------------|--------|----------|---------|--|--|--|
| | | | | NUMBER | INTERVAL | REC (%) | | | |
| | NORTHING: 4944303.17 EASTING: 590518.91 | TOP OF RISER GROUND SURFACE 245.88 245.35 | | | | | | | |
| 0.5 | SW-SAND, with fine and coarse subrounded gravel, trace cobble, fine grained, well graded, light brown, dry | | CONCRETE | 1RS | | 100 | | | |
| 1.0 | | | BENTONITE GROUT | 2RS | | 100 | | | |
| 1.5 | SP-SAND, fine grained, poorly graded, brown, dry | 242.91 | 51mm PVC WELL CASING | 3RS | | 100 | | | |
| 2.0 | | | 152mm BOREHOLE | 4RS | | 100 | | | |
| 2.5 | | | | | | | | | |
| 3.0 | | | | | | | | | |
| 3.5 | SW-SAND, with fine gravel, trace coarse subrounded gravel, fine grained, brown, dry | 237.73 | | | | | | | |
| 4.0 | | | | | | | | | |
| 4.5 | | | | | | | | | |
| 5.0 | | | | | | | | | |
| 5.5 | | | | | | | | | |
| 6.0 | | | | | | | | | |
| 6.5 | | | | | | | | | |
| 7.0 | | | | | | | | | |
| 7.5 | | | | | | | | | |
| 8.0 | | | | | | | | | |
| 8.5 | | | | | | | | | |
| 9.0 | | | | | | | | | |
| 9.5 | | | | | | | | | |

NOTES: MEASURING POINT ELEVATIONS MAY CHANGE; REFER TO CURRENT ELEVATION TABLE

OVERBURDEN LOG 11155365-WI.GPJ GHD_Corp 15/6/18



STRATIGRAPHIC AND INSTRUMENTATION LOG (OVERBURDEN)

PROJECT NAME: CRH-TEEDON PIT
 PROJECT NUMBER: 11155365
 CLIENT: CRH CANADA GROUP INC
 LOCATION: TINY TOWNSHIP, ONTARIO

HOLE DESIGNATION: MW8-18
 DATE COMPLETED: 11 June 2018
 DRILLING METHOD: SONIC
 FIELD PERSONNEL: S. MOLONEY

| DEPTH m BGS | STRATIGRAPHIC DESCRIPTION & REMARKS | ELEV. m | MONITORING WELL | SAMPLE | | | |
|----------------|---|------------|-----------------|--------|----------|---------|--|
| | | | | NUMBER | INTERVAL | REC (%) | |
| 10.5 | - medium grained, with fine grained, wet at 14.63m BGS | | | 5RS | | 75 | |
| 11.0 | | | | | | | |
| 11.5 | | | | | | | |
| 12.0 | | | | | | | |
| 12.5 | | | | | | | |
| 13.0 | | | | | | | |
| 13.5 | | | | | | | |
| 14.0 | | | | | | | |
| 14.5 | GP-SANDY GRAVEL/GRAVEL, with fine sand, fine and coarse subrounded to subangular gravel, well graded, grey, wet | 228.89 | | 6RS | | 20 | |
| 14.5 | | | | | | | |
| 15.0 | | | | | | | |
| 15.5 | | | | | | | |
| 16.0 | GP-SANDY GRAVEL/GRAVEL, with fine sand, fine and coarse subrounded to subangular gravel, well graded, grey, wet | 228.89 | | 7RS | | 100 | |
| 16.5 | | | | | | | |
| 17.0 | | | | | | | |
| 17.5 | | | | | | | |
| 18.0 | GP-SANDY GRAVEL/GRAVEL, with fine sand, fine and coarse subrounded to subangular gravel, well graded, grey, wet | 228.89 | | 8RS | | 100 | |
| 18.5 | | | | | | | |
| 19.0 | | | | | | | |
| 19.5 | | | | | | | |

NOTES: MEASURING POINT ELEVATIONS MAY CHANGE; REFER TO CURRENT ELEVATION TABLE

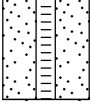
OVERBURDEN LOG 11155365-WI.GPJ GHD_Corp 15/6/18



STRATIGRAPHIC AND INSTRUMENTATION LOG (OVERBURDEN)

PROJECT NAME: CRH-TEEDON PIT
 PROJECT NUMBER: 11155365
 CLIENT: CRH CANADA GROUP INC
 LOCATION: TINY TOWNSHIP, ONTARIO

HOLE DESIGNATION: MW8-18
 DATE COMPLETED: 11 June 2018
 DRILLING METHOD: SONIC
 FIELD PERSONNEL: S. MOLONEY

| DEPTH m BGS | STRATIGRAPHIC DESCRIPTION & REMARKS | ELEV. m | MONITORING WELL | SAMPLE | | | |
|--|-------------------------------------|------------|---|--------|----------|---------|--|
| | | | | NUMBER | INTERVAL | REC (%) | |
| 20.5 21.0 21.5 22.0 22.5 23.0 23.5 24.0 24.5 25.0 25.5 26.0 26.5 27.0 27.5 28.0 28.5 29.0 29.5 | END OF BOREHOLE @ 20.73m BGS | 224.62 | SCREEN  | | | | |
| | | | WELL DETAILS Screened interval: 227.67 to 224.62m 17.68 to 20.73m BGS Length: 3.05m Diameter: 51mm Slot Size: 0.010 Material: PVC Seal: 229.19 to 228.28m 16.15 to 17.07m BGS Material: BENTONITE CHIPS Sand Pack: 228.28 to 224.62m 17.07 to 20.73m BGS Material: SAND | | | | |

NOTES: MEASURING POINT ELEVATIONS MAY CHANGE; REFER TO CURRENT ELEVATION TABLE

OVERBURDEN LOG 11155365-WI.GPJ GHD_Corp 15/6/18



STRATIGRAPHIC AND INSTRUMENTATION LOG (OVERBURDEN)

PROJECT NAME: CRH-TEEDON PIT
 PROJECT NUMBER: 11155365
 CLIENT: CRH CANADA GROUP INC
 LOCATION: TINY TOWNSHIP, ONTARIO

HOLE DESIGNATION: MW9-18
 DATE COMPLETED: 6 June 2018
 DRILLING METHOD: SONIC
 FIELD PERSONNEL: Shawn Moloney

| DEPTH m BGS | STRATIGRAPHIC DESCRIPTION & REMARKS | ELEV. m | MONITORING WELL | SAMPLE | | | | |
|----------------|---|--------------------------------|------------------|--------|----------|---------|--|--|
| | | | | NUMBER | INTERVAL | REC (%) | | |
| | NORTHING: 4944734.11 EASTING: 591302.29 | TOP OF RISER GROUND SURFACE | 292.50 291.58 | | | | | |
| 0.5 | TOPSOIL, sandy silt, loose, fine grained sand, dark brown, dry | | | | | | | |
| 1.0 | SM- SAND, with silt, with to trace fine and coarse gravel, loose, fine grained, well graded, brown, dry | 290.97 | | 1RS | | 56 | | |
| 2.5 | | | | | | | | |
| 3.0 | SW- SAND, with gravel, trace silt, compact, fine grained, fine and coarse subrounded gravel, light brown, dry | 288.84 | | | | | | |
| 3.5 | - gravelly sand, fine to medium sand from 3.61 to 6.48m BGS | | | 2RS | | 100 | | |
| 4.5 | | | | | | | | |
| 5.0 | | | | 3RS | | 100 | | |
| 6.5 | - silty sand, with gravel, with cobbles seam, fine grained, dry from 6.50 to 7.32m BGS | | | | | | | |
| 7.5 | | | | 4RS | | 100 | | |
| 8.5 | fine to medium grained, fine gravel, brown | | | | | | | |
| 9.0 | fine grained, fine and coarse gravel, trace cobbles, light grey | 282.74 | | | | | | |
| 9.5 | - silt seam, very fine grained, light grey from 9.91 | | | | | | | |

NOTES: MEASURING POINT ELEVATIONS MAY CHANGE; REFER TO CURRENT ELEVATION TABLE
 WATER FOUND ∇

OVERBURDEN LOG 11155365-WI.GPJ GHD_Corp 15/6/18



STRATIGRAPHIC AND INSTRUMENTATION LOG (OVERBURDEN)

PROJECT NAME: CRH-TEEDON PIT

HOLE DESIGNATION: MW9-18

PROJECT NUMBER: 11155365

DATE COMPLETED: 6 June 2018

CLIENT: CRH CANADA GROUP INC

DRILLING METHOD: SONIC

LOCATION: TINY TOWNSHIP, ONTARIO

FIELD PERSONNEL: Shawn Moloney

| DEPTH m BGS | STRATIGRAPHIC DESCRIPTION & REMARKS | ELEV. m | MONITORING WELL | SAMPLE | | | | |
|----------------|--|------------|-----------------|--------|----------|---------|--|--|
| | | | | NUMBER | INTERVAL | REC (%) | | |
| 10.5 | to 11.05m BGS | | | 5RS | | 100 | | |
| 11.0 | | | | | | | | |
| 11.5 | | | | | | | | |
| 12.0 | - with to trace gravel, trace cobbles, grey at 11.89m BGS | 279.70 | | | | | | |
| 12.5 | | | | | | | | |
| 13.0 | SP- SAND, fine grained, poorly graded, brown/grey, dry | 278.68 | | 6RS | | 100 | | |
| 13.5 | | | | | | | | |
| 14.0 | | | | | | | | |
| 14.5 | - moist at 14.68m BGS | | | | | | | |
| 15.0 | SW- SAND with GRAVEL, trace cobble, fine grained sand, fine and coarse grained gravel, well graded, brown, moist | 276.60 | | | | | | |
| 15.5 | - dry at 15.70m BGS | | | | | | | |
| 16.0 | - trace gravel seam, moist from 16.15 to 16.76m BGS | | | | | | | |
| 16.5 | | | | 7RS | | 100 | | |
| 17.0 | | | | | | | | |
| 17.5 | - gravelly sand, moist at 17.73m BGS | | | | | | | |
| 18.0 | | | | | | | | |
| 18.5 | | | | | | | | |
| 19.0 | - with gravel, grey at 18.90m BGS | | | | | | | |
| 19.5 | | | | 8RS | | 100 | | |

NOTES: MEASURING POINT ELEVATIONS MAY CHANGE; REFER TO CURRENT ELEVATION TABLE
WATER FOUND ∇

OVERBURDEN LOG 11155365-WI.GPJ GHD_Corp 15/6/18



STRATIGRAPHIC AND INSTRUMENTATION LOG (OVERBURDEN)

PROJECT NAME: CRH-TEEDON PIT
PROJECT NUMBER: 11155365
CLIENT: CRH CANADA GROUP INC
LOCATION: TINY TOWNSHIP, ONTARIO

HOLE DESIGNATION: MW9-18
DATE COMPLETED: 6 June 2018
DRILLING METHOD: SONIC
FIELD PERSONNEL: Shawn Moloney

| DEPTH m BGS | STRATIGRAPHIC DESCRIPTION & REMARKS | ELEV. m | MONITORING WELL | SAMPLE | | | |
|----------------|---|------------|-----------------|--------|----------|---------|--|
| | | | | NUMBER | INTERVAL | REC (%) | |
| 20.5 | | | | | | | |
| 21.0 | | | | | | | |
| 21.5 | | | | | | | |
| 22.0 | | | | | | | |
| 22.5 | | | | 9RS | | 100 | |
| 23.0 | | | | | | | |
| 23.5 | | | | | | | |
| 24.0 | | | | | | | |
| 24.5 | | | | | | | |
| 25.0 | | | | | | | |
| 25.5 | - trace silt seam, fine to very fine grained from 25.60 to 26.44m BGS | | | 10RS | | 100 | |
| 26.0 | | | | | | | |
| 26.5 | | | | | | | |
| 27.0 | | | | | | | |
| 27.5 | | | | | | | |
| 28.0 | | | | | | | |
| 28.5 | - trace silt seam, fine to very fine grained from 28.65 to 29.03m BGS | | | 11RS | | 100 | |
| 29.0 | | | | | | | |
| 29.5 | | | | | | | |

OVERBURDEN LOG 11155365-WI.GPJ GHD_Corp 15/6/18

NOTES: MEASURING POINT ELEVATIONS MAY CHANGE; REFER TO CURRENT ELEVATION TABLE
WATER FOUND ∇



STRATIGRAPHIC AND INSTRUMENTATION LOG (OVERBURDEN)

PROJECT NAME: CRH-TEEDON PIT
 PROJECT NUMBER: 11155365
 CLIENT: CRH CANADA GROUP INC
 LOCATION: TINY TOWNSHIP, ONTARIO

HOLE DESIGNATION: MW9-18
 DATE COMPLETED: 6 June 2018
 DRILLING METHOD: SONIC
 FIELD PERSONNEL: Shawn Moloney

| DEPTH m BGS | STRATIGRAPHIC DESCRIPTION & REMARKS | ELEV. m | MONITORING WELL | SAMPLE | | | |
|----------------|--|------------|-----------------|--------|----------|---------|--|
| | | | | NUMBER | INTERVAL | REC (%) | |
| 40.5 | grey at 39.93m BGS | | | | | | |
| 41.0 | | | | 15RS | | 100 | |
| 41.5 | | | | | | | |
| 42.0 | | | | | | | |
| 42.5 | - sand, with gravel, medium grained, brown-grey at 42.37m BGS | | | | | | |
| 43.0 | - fine grained at 42.98m BGS | | | | | | |
| 43.5 | - gravelly sand seam, trace cobbles, fine grained, fine and coarse subrounded to subangular gravel, well graded from 43.48 to 44.20m BGS | | | 16RS | | 100 | |
| 44.0 | | | | | | | |
| 44.5 | | | | | | | |
| 45.0 | - medium grained, with fine grained at 44.88m BGS | | | | | | |
| 45.5 | | | | | | | |
| 46.0 | | | | | | | |
| 46.5 | | | | | | | |
| 47.0 | | | | 17RS | | 100 | |
| 47.5 | | | | | | | |
| 48.0 | | | | | | | |
| 48.5 | | | | | | | |
| 49.0 | | | | | | | |
| 49.5 | | | | | | | |

NOTES: MEASURING POINT ELEVATIONS MAY CHANGE; REFER TO CURRENT ELEVATION TABLE
 WATER FOUND ∇

OVERBURDEN LOG 11155365-WI.GPJ GHD_Corp 15/6/18



STRATIGRAPHIC AND INSTRUMENTATION LOG (OVERBURDEN)

PROJECT NAME: CRH-TEEDON PIT
 PROJECT NUMBER: 11155365
 CLIENT: CRH CANADA GROUP INC
 LOCATION: TINY TOWNSHIP, ONTARIO

HOLE DESIGNATION: MW9-18
 DATE COMPLETED: 6 June 2018
 DRILLING METHOD: SONIC
 FIELD PERSONNEL: Shawn Moloney

| DEPTH m BGS | STRATIGRAPHIC DESCRIPTION & REMARKS | ELEV. m | MONITORING WELL | SAMPLE | | | |
|--|--|------------|--|--------|----------|---------|--|
| | | | | NUMBER | INTERVAL | REC (%) | |
| 60.5 61.0 61.5 62.0 62.5 63.0 63.5 64.0 64.5 65.0 65.5 66.0 66.5 67.0 67.5 68.0 68.5 69.0 69.5 | <div style="border: 1px solid black; padding: 5px; margin-bottom: 10px;"> </div> <p>END OF BOREHOLE @ 60.66m BGS</p> | 230.93 | <div style="border: 1px solid black; padding: 5px; margin-bottom: 10px;"> </div> <p><u>WELL DETAILS</u> Screened interval: 233.98 to 230.93m 57.61 to 60.66m BGS Length: 3.05m Diameter: 51mm Slot Size: 10 Material: Sch. 80 PVC Seal: 236.11 to 234.59m 55.47 to 57.00m BGS Material: BENTONITE PELLETS Sand Pack: 234.59 to 230.93m 57.00 to 60.66m BGS Material: SILICA SAND No.2 ----- Seal: 290.97 to 234.59m 0.61 to 57.00m BGS Material: BENTONITE GROUT ----- Seal: 291.58 to 290.97m 0.00 to 0.61m BGS Material: CONCRETE</p> | | | | |

NOTES: MEASURING POINT ELEVATIONS MAY CHANGE; REFER TO CURRENT ELEVATION TABLE
 WATER FOUND ▼

OVERBURDEN LOG 11155365-WI.GPJ GHD_Corp 15/6/18



STRATIGRAPHIC AND INSTRUMENTATION LOG (OVERBURDEN)

PROJECT NAME: CRH-TEEDON PIT
 PROJECT NUMBER: 11155365
 CLIENT: CRH CANADA GROUP INC
 LOCATION: TINY TOWNSHIP, ONTARIO

HOLE DESIGNATION: MW10D-18
 DATE COMPLETED: 6 June 2018
 DRILLING METHOD: SONIC
 FIELD PERSONNEL: S. MOLONEY

| DEPTH m BGS | STRATIGRAPHIC DESCRIPTION & REMARKS | ELEV. m | MONITORING WELL | SAMPLE | | | |
|---|--|--|-----------------|----------------------------------|----------------------------------|---------|--|
| | | | | NUMBER | INTERVAL | REC (%) | |
| | NORTHING: 4945177 EASTING: 591741.82 | TOP OF RISER GROUND SURFACE 260.52 259.55 | | | | | |
| 0.5 1.0 1.5 2.0 2.5 3.0 3.5 4.0 4.5 5.0 5.5 6.0 6.5 7.0 7.5 8.0 8.5 9.0 9.5 | <p>TOPSOIL, with silt, trace sand, trace organics, dark brown, moist</p> <p>ML-SILT, trace very fine sand, medium dilatancy, brown, moist to wet - highly dilatant, wet at 0.69m BGS</p> <p>- no sand, grey at 1.22m BGS</p> <p>- trace very fine sand at 3.56m BGS</p> <p>- trace to no sand at 4.27m BGS</p> <p>- trace very fine sand at 5.13m BGS</p> <p>- with clay seam, hard, low plasticity at 7.82m BGS</p> | <p>259.39</p> | | <p>1RS</p> <p>2RS</p> <p>3RS</p> | <p>100</p> <p>100</p> <p>100</p> | | |

NOTES: MEASURING POINT ELEVATIONS MAY CHANGE; REFER TO CURRENT ELEVATION TABLE

OVERBURDEN LOG 11155365-WI.GPJ GHD_Corp 15/6/18



STRATIGRAPHIC AND INSTRUMENTATION LOG (OVERBURDEN)

PROJECT NAME: CRH-TEEDON PIT
 PROJECT NUMBER: 11155365
 CLIENT: CRH CANADA GROUP INC
 LOCATION: TINY TOWNSHIP, ONTARIO

HOLE DESIGNATION: MW10S-18
 DATE COMPLETED: 6 June 2018
 DRILLING METHOD: SONIC
 FIELD PERSONNEL: S. MOLONEY

| DEPTH m BGS | STRATIGRAPHIC DESCRIPTION & REMARKS | ELEV. m | MONITORING WELL | SAMPLE | | | |
|----------------|---|------------------|-----------------|--------|----------|---------|--|
| | | | | NUMBER | INTERVAL | REC (%) | |
| | TOP OF RISER GROUND SURFACE | 260.42 259.44 | | | | | |
| 0.5 | TOPSOIL, with silt, trace sand, trace organics, dark brown, moist | 259.28 | | | | | |
| 1.0 | ML-SILT, trace very fine sand, medium dilatancy, brown, moist to wet - highly dilatant, wet at 0.69m BGS | | | 1RS | | 80 | |
| 1.5 | - no sand, grey at 1.22m BGS | | | | | | |
| 2.0 | | | | | | | |
| 2.5 | | | | | | | |
| 3.0 | | | | | | | |
| 3.5 | - trace very fine sand at 3.56m BGS | | | | | | |
| 4.0 | | | | 2RS | | 100 | |
| 4.5 | - trace to no sand at 4.27m BGS | | | | | | |
| 5.0 | | | | | | | |
| 5.5 | - trace very fine sand at 5.13m BGS | | | | | | |
| 6.0 | | | | | | | |
| 6.5 | | | | | | | |
| 7.0 | | | | 3RS | | 100 | |
| 7.5 | | | | | | | |
| 8.0 | - with clay seam, hard, low plasticity at 7.82m BGS | | | | | | |
| 8.5 | | | | | | | |
| 9.0 | | | | | | | |
| 9.5 | | | | 4RS | | 100 | |

NOTES: MEASURING POINT ELEVATIONS MAY CHANGE; REFER TO CURRENT ELEVATION TABLE

OVERBURDEN LOG 11155365-WI.GPJ GHD_Corp 15/6/18



STRATIGRAPHIC AND INSTRUMENTATION LOG (OVERBURDEN)

PROJECT NAME: CRH-TEEDON PIT
 PROJECT NUMBER: 11155365
 CLIENT: CRH CANADA GROUP INC
 LOCATION: TINY TOWNSHIP, ONTARIO

HOLE DESIGNATION: MW10S-18
 DATE COMPLETED: 6 June 2018
 DRILLING METHOD: SONIC
 FIELD PERSONNEL: S. MOLONEY

| DEPTH m BGS | STRATIGRAPHIC DESCRIPTION & REMARKS | ELEV. m | MONITORING WELL | SAMPLE | | | |
|--|--|---------------|--|--------|----------|---------|--|
| | | | | NUMBER | INTERVAL | REC (%) | |
| <div style="display: flex; align-items: center;"> </div> | <div style="display: flex; align-items: center;"> </div> <p style="margin-top: 10px;">END OF BOREHOLE @ 10.67m BGS</p> | <p>248.77</p> | <div style="display: flex; align-items: center;"> </div> <p style="margin-top: 5px;">WELL DETAILS</p> <p>Screened interval: 251.82 to 248.77m 7.62 to 10.67m BGS</p> <p>Length: 3.05m Diameter: 51mm Slot Size: 0.010 Material: PVC</p> <p>Seal: 253.34 to 252.43m 6.10 to 7.01m BGS Material: BENTONITE CHIPS</p> <p>Sand Pack: 252.43 to 248.77m 7.01 to 10.67m BGS Material: SAND</p> | | | | |

NOTES: MEASURING POINT ELEVATIONS MAY CHANGE; REFER TO CURRENT ELEVATION TABLE

OVERBURDEN LOG 11155365-WI.GPJ GHD_Corp 15/6/18