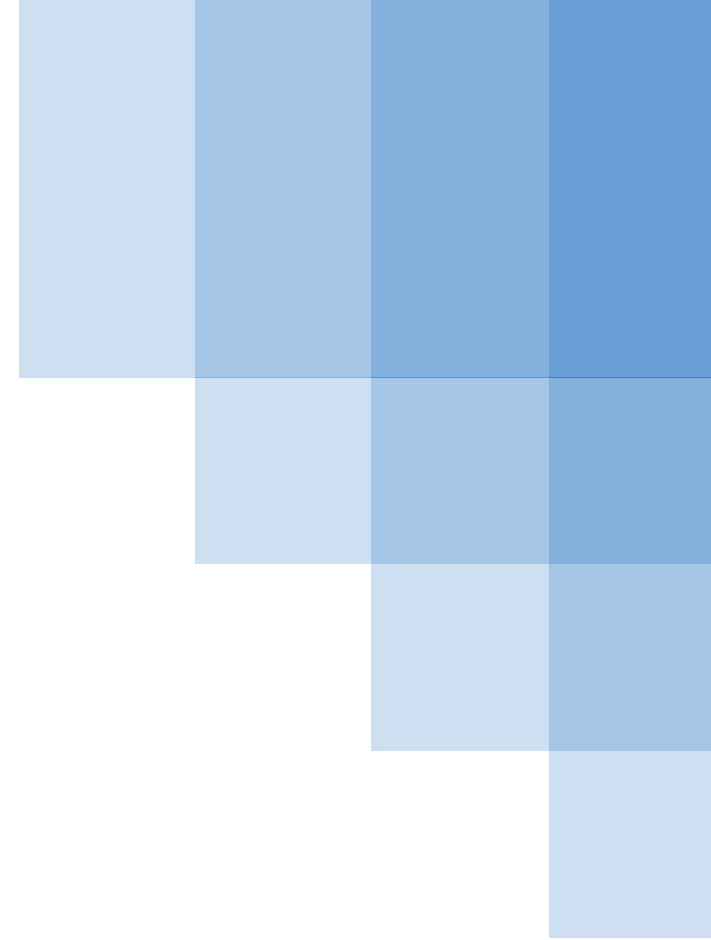




# Dufferin Aggregates Paris Pit CAP Meeting

October 16, 2017



# Agenda

- Welcome
- Review & Approval of Minutes from May 2016 Meeting
- Operations Update
- Website
- Rehabilitation Cost Analysis
- Review of Terms of Reference

# Operations Update

## Operations Update

- The Environmental Review Tribunal (ERT) hearing regarding the CCOB appeal on the water approvals was completed in February 2017.
- The ERT issued their decision April 11, 2017. The decision resulted in some wording changes on the Permit to Take Water and Environmental Compliance approval.
- The decision allowed the Ministry of Environment and Climate change to issue the two water approvals and Dufferin to commence washing under the conditions on the permits.
- CCOB has filed a request with the Minister of Environment and Climate Change to overturn the ERT decision.

# Operations Update

- Operations from January to the end of July 2017 have included:
  - Shipping to customers
  - Processing dry products
  - Earth Day tree planting



## Operations Update

- Operations from the end of July to present in 2017 have included:
  - Shipping to customers
  - Completion of settling and recirculation ponds
  - Extracting the source water pond
  - Processing dry and washed products



## Operations Update



Source  
water pond  
was  
completed  
in early  
September

## Operations Update

- Wash plant and field conveyors





# Operations Update

- Aerial illustrating plant layout and north end of settling pond



# Operations Update

- Best management practices used at other Dufferin sites are used at the Paris Pit.
- Dust Controls
  - Field conveyor
  - Water truck & sweeper
  - Surface treated roadway



- Noise Controls
  - Field conveyor
  - Processing equipment operating close to pit face and oriented to use pit face as shielding
- Silica
  - Employee testing to be completed in 2018

## Operations Update

- The Dufferin Aggregates Paris Pit was the third site certified under the Cornerstone Standards Council
  - CSC completed an evaluation assessment of the Dufferin Aggregates Paris Pit on June 13 to 15, 2017. The assessment involved an on-site visit, review of documents, and interviews of staff and interested parties.
- On August 17, 2017 the Dufferin Aggregates Paris Pit received CSC Certification.



# Website

# Dufferin Aggregates Paris Pit Website

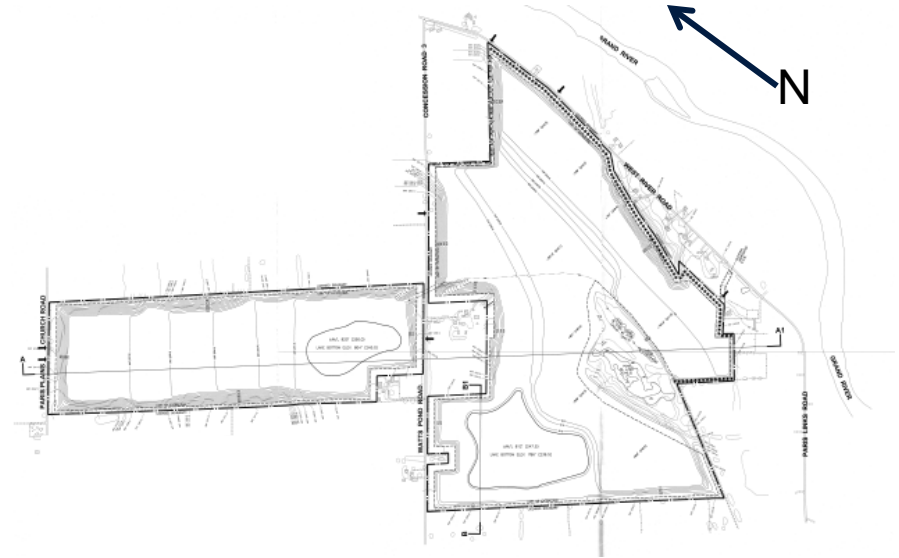
- The website has reports posted.
- Future reports (example: annual water reports) will be posted here as well.

<p>Contact(s)</p> <p><b>CRH Canada Group Inc.</b> Head Office 2300 Steeles Ave West. 4th Floor Concord, ON L5K 5X6</p> <p>Head Office: 905-761-7100</p>	 <p>Monitoring Reports</p> <ul style="list-style-type: none"><li><a href="#">2015 Monitoring Report - March 24, 2016</a></li><li><a href="#">2016 Monitoring Report - March 30, 2017</a></li></ul> <p>Other Reports and Plans</p> <ul style="list-style-type: none"><li>• <a href="#">Dufferin Aggregates Paris Pit - Trigger Mechanism and Contingency Plan</a></li><li>• <a href="#">Dufferin Aggregates Paris Pit - Contingency and Pollution Prevention Plan</a></li><li>• <a href="#">Dufferin Aggregates Paris Pit - Vegetation Investigation</a></li><li>• <a href="#">Dufferin Aggregates Paris Pit - Wildlife Investigation</a></li></ul>
---	--

# Rehabilitation Cost Analysis

# Rehabilitation Cost Analysis

- The licence issued by the Ministry of Natural Resources and Forestry includes the requirement to rehabilitate the site.
- The site plans include the details on how rehabilitation is completed:
  - Backfilling side slopes
  - Grading the pit floor
  - Establishing vegetation



# Rehabilitation Cost Analysis

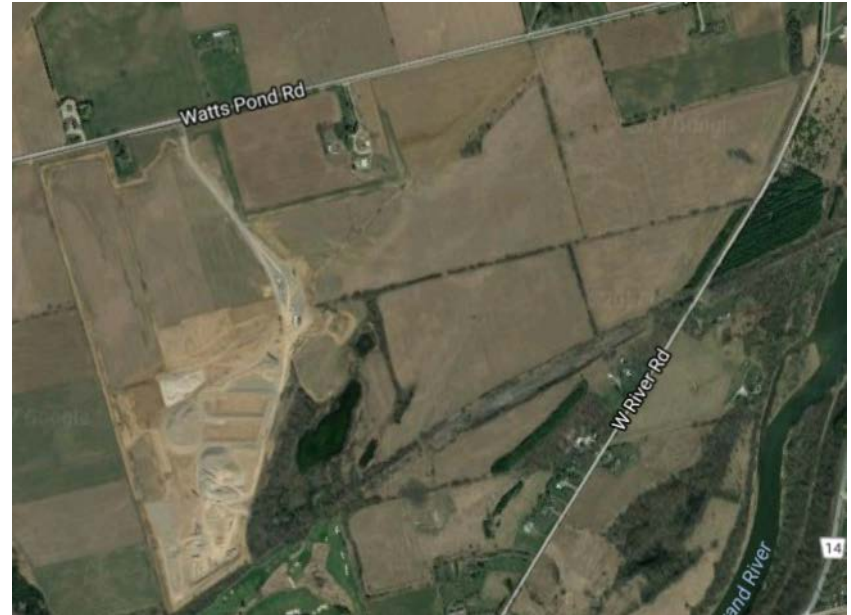
- DFA has a rehabilitation provision for all sites. The amount of the provision is based on the estimated cost to carry out rehabilitation.
- The cost estimate is based on a current aerial photograph and a topographic survey.
- Based on the current condition at the site, the cost to replace soil, grading, seeding, tree planting etc. is calculated.
- The provision is for current rehabilitation liability and future.





# Rehabilitation Cost Analysis

- The current existing topography is compared to the final rehabilitation topography.
- Volumes of soil are determined.
- Costs to move soil based on current contracts are used.
- A total cost for rehabilitation is determined.



# Review of Terms of Reference

# Closing

- Next Meeting Date