

Dufferin Aggregates – Paris Pit

Community Advisory Panel (CAP) Meeting

April 24, 2012



Welcome & Introductions

Thank you all for being here today for the first Paris Community Advisory Panel (CAP)

Holcim Canada/ Dufferin Aggregates:

- Andrea Bourrie, Director, Planning and Regulatory Affairs
- Rafael Chocomeli, Regional Operations Manager West
- Sean Routledge, Site Manager
- Susan Melchin, CSR Representative

Facilitators:

- Linda Smith
- Joanne Kearney
- Courtney Somers



Agenda

1. Holcim Canada Overview
2. Dufferin Aggregates Paris Pit
3. What is a CAP?
4. DRAFT Paris Pit CAP Terms of Reference
5. Holcim's Commitment to Community Engagement
6. Questions and General Discussion
7. Next Steps

Before we begin today's meeting....

- We would like to address a key element regarding our operations in Paris:

Although our license was obtained in 1974....

Dufferin Aggregates will be operating the Paris Pit based on **TODAY's standards**

We are absolutely committed to working with you, the local community, and to proceed in a fully transparent and open manner in starting our operations.

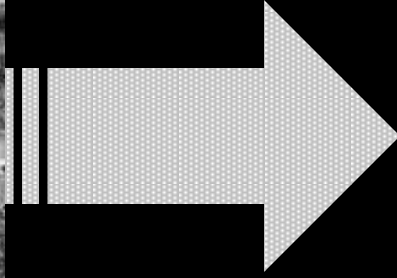
This CAP meeting is an excellent platform for us provide, facilitate and encourage two-way communication



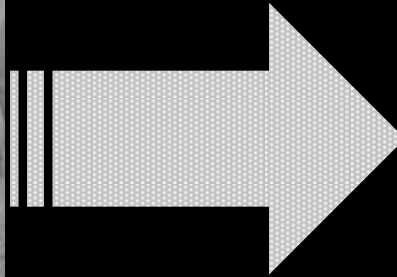
TODAY's standards are highly regulated

- **Environmental Certificate of Approval (Air and Noise Emissions)**
 - ▶ Dufferin to prepare technical reports and submit to MOE; includes EBR posting
- **Permit to Take Water (PTTW)**
 - ▶ Dufferin to prepare technical reports and submit to MOE; includes EBR posting
 - ▶ Ongoing monitoring and assessment for input to Source Protection Plan
 - ▶ Adjustments to operations plan under direction of Source Protection Authority and/or MOE
- **Endangered Species Act**
 - ▶ Ongoing assessment and monitoring
 - ▶ Adjustment to operations plan under direction of MNR
- **General Ecology (birds, bees, trees)**
 - ▶ Ongoing assessment and monitoring
 - ▶ Adjustments to operations plan in consultation with conservation authority, MNR and community
- **Transportation (County Roads and general traffic safety)**
 - ▶ Abide by designated county haul road
 - ▶ Completion of Watts Pond Road upgrades at directed by County
 - ▶ Ongoing road safety initiatives as directed by County and OPP

Creating value and delivering results for a century

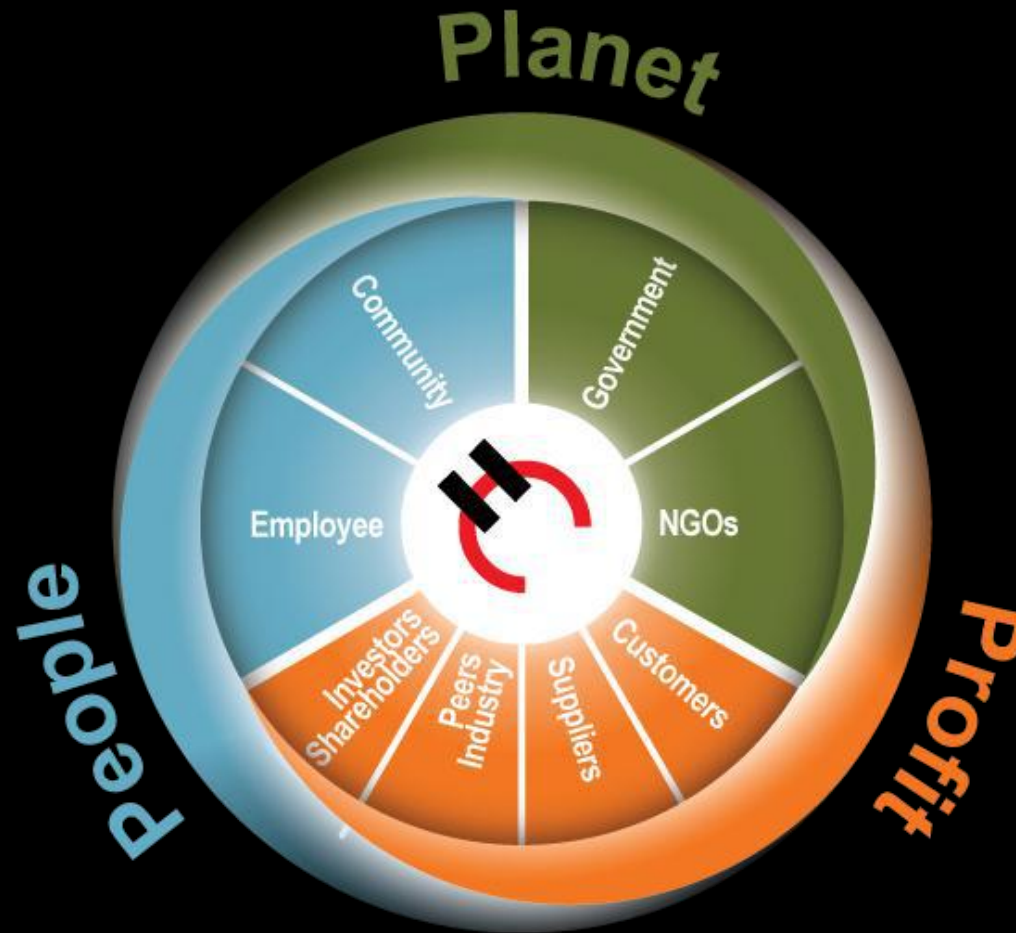


The Holcim story began 100 years ago in the small village of Holderbank Switzerland. Today, the company has over 80,000 employees and is present in approximately 70 countries around the world.



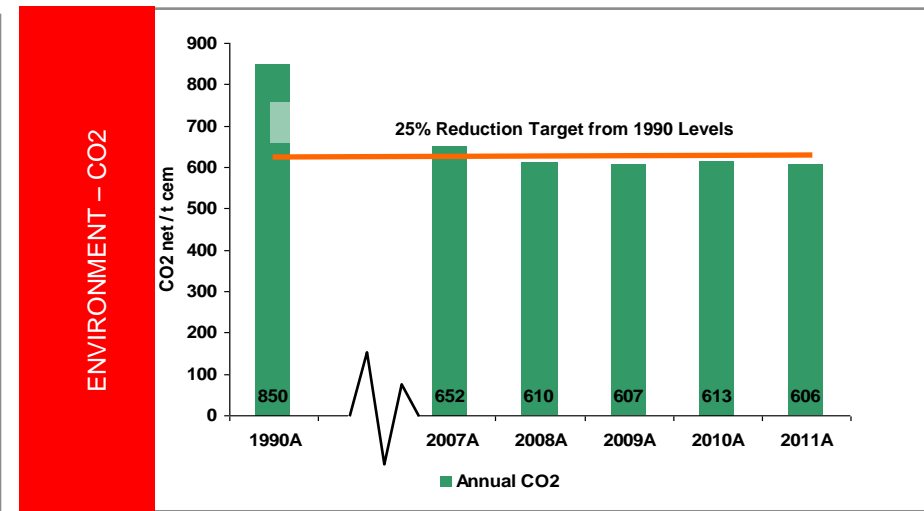
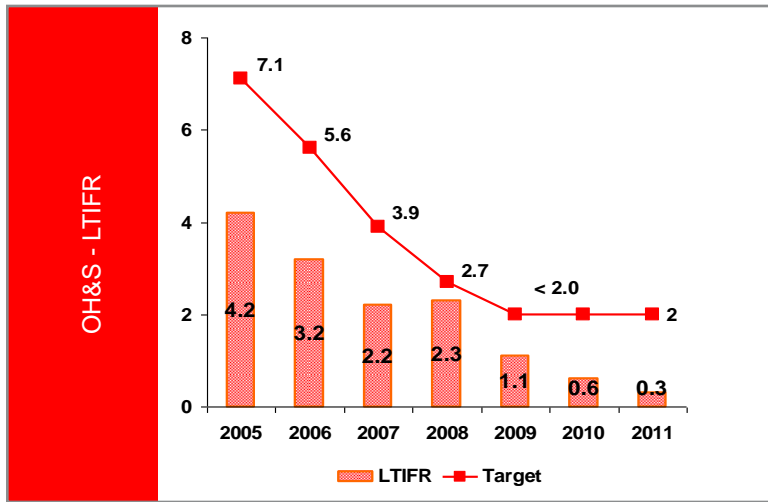
With 3,000 employees, Holcim Canada and its divisions of Dufferin and Demix manufacture cement, aggregates and ready-mix concrete and provide construction services to many of Canada's largest infrastructure projects.

Our business has an impact far broader than our services, operational sites or products. As such we place the utmost importance on balancing the triple bottom line through respect for **PEOPLE, PROFIT, and PLANET**.



“We are committed to balancing the triple bottom line of economic growth, environmental performance and social responsibility. Corporate Social Responsibility and Sustainable development is at the heart of our business strategy” – Paul Ostrander, President & CEO, Holcim Canada Inc.

We are a strong believer of what gets measured gets managed. As such, we have strong company wide objectives around Health & Safety, Environment and Community initiatives



As a major employer and a part of the local community Dufferin Aggregates has a long term commitment to our neighbors and our efforts are recognized in the communities we operate in



Dufferin Aggregates named Business of the Year

Halton Hills top business for 2010 is one that's been operating in town for more than 100 years.

That honour goes to Dufferin Aggregates Acton Quarry, which was named Halton Hills Chamber of Commerce Business of the Year.

The quarry was established in the early 1900s and today produces more than 3 million tonnes of aggregate for the construction industry employing approximately



Dufferin Aggregates named... Rob McDougall, (right) Site Manager, Acton Quarry, with Dufferin Aggregates employees after the company was named Halton Hills Chamber of Commerce Business of the Year.



Drum roll please

Dufferin Concrete, a division of Holcim Canada Inc., unveiled recently a ready-mix concrete truck adorned with the logos of 10 companies that have raised \$50,000 for the redevelopment of the emergency department at McMaster Children's Hospital. Entering its fourth year, the Drum Sponsorship Program raises funds by highlighting the commitment of various business partners by showcasing their logo on the drums of Dufferin Concrete's trucks for a year. Pictured here, representatives from Dufferin Concrete and the 10 companies that donated for the redevelopment.



News from globeandmail.com
Holcim Canada employees demonstrate their commitment to the environment

Wednesday, May 04, 2011

To view the Social Media Release, click here:

Dufferin Aggregates assures of best practices

The company behind a proposed grave pit on Watts Pond Road wants concerned residents to know they intend on putting their best foot forward.



Big wheel. Seven-year-old Sam Rosales has some pretends to roll in a giant Caterpillar 777D dump truck. GRAHAM PAINE/CANADIAN CHAMPION

ABOUT US | CONTACT US | SUBSCRIPTION CENTRE

MAGAZINE

Current Issue
 Past Issues
 News Archives

Leader of the Pack

When it comes to aggregates, Dufferin

Written by **Rob Blackstein**

On the blackboard in the boardroom of striking of which is from Albert Einstein, different results."

MARKETPLACE

Dufferin contributes to new Terraced Green at Acton Library

Dufferin Aggregates presented a cheque for \$50,000 to the Mayor Rick Bonnette to provide for the stone seating, native trees and shrubs and interpretive signage about the history of aggregates in Halton Hills at the official opening ceremony of the

to the west of the branch, was created with the sponsorship of Dufferin Aggregates, a division of Holcim Canada Ltd. The opening ceremony was held June 23.

"As a major local employer and a long-standing partner in the Acton community, Dufferin

and will be used in future library programming and events. The Library has recently applied for the gold level of LEED (an international certification which stands for Leadership in Energy and Environmental Design). The use of native trees, grasses and shrubs

We recognize that we can achieve much more working through collaborations and partnerships



DRANT WATERWAYS FOUNDATION



McMaster
Children's Hospital



Halton Healthcare



spring
time
PARIS



SCOUTS CANADA



SickKids[®]
FOUNDATION



A division of Holcim (Canada) Inc.

Community Advisory Panels (CAP) are one way that Dufferin engages with the communities where it operates.

- Provide, encourage and facilitate two-way communication.
- Panel members are encouraged to share information with other community stakeholders, as well as bring feedback and comments from the community to the meetings.
- Panel members set the topics of discussion at meetings, based on their interests and needs.
- Dufferin will bring in staff and/or specialists to discuss each topic, as required.

The Draft Terms of Reference is intended to be a starting point for determining how the group will work together.

CAP Mission

- Provide, encourage and facilitate two-way communication between local residents/regional stakeholders and Dufferin Aggregates on operations.
- Educate stakeholder groups and the community on the importance of aggregate in our society.
- Maintain/improve relationships with neighbours and community organizations.

CAPs are in place at many Holcim sites and a standard selection process is used to identify stakeholders interested in participating.

Selection of CAP Members

Members identified by Dufferin Aggregates for the Committee are required to:

- Live, operate a business, or have some connection to the local area.
- Be available to attend regular meetings as determined by the CAP.
- All members are volunteers. There is no remuneration for participation; however expenses such as mileage will be reimbursed.

The roles and responsibilities for both Dufferin and CAP members is explained so that the CAP can operate effectively.

Role of CAP Members

- Serve in an advisory capacity.
- Review and analyze information for the purpose of providing comments to Dufferin Aggregates.
- Share information with community stakeholders. Dufferin Aggregates will provide the necessary assistance to prepare and distribute this information.

Meetings will generally be held in the evening over a two-hour time period to be determined by the CAP.

Meeting Protocol

- A third-party facilitator will moderate the CAP meetings; minutes will be taken by a member of the facilitation team.
- CAP members will have an opportunity to contribute to the content of the agenda.
- Meetings are open to the public, there will be an opportunity to hold an open forum as part of CAP meetings.
- All meeting materials, including minutes, agendas, PowerPoint presentations, Terms of Reference and others, will be considered draft until approved by the CAP.

Aggregates



19mm Concrete Stone and Concrete Sand are aggregates used to produce ready mix concrete. Ready mix concrete is used in a wide range of construction applications such as curbs and sidewalks, footings and foundations, and driveways, roads and bridges.



19mm Clear Stone is used in several applications including hot mix asphalt; to cover sewer/water main pipes; drainage stone around weeping tiles; and as a drainage layer underneath concrete floors in basements and garages.



13.2mm Clear/HL3 Stone is also used in various concrete applications such as manufacturing of concrete pipe, concrete block and patio stones, and ready mix concrete. It is also more commonly used in hot mix asphalt applications such as driveway mixes and top coat asphalt for the construction of roads and highways.



Granular A and Granular B are aggregates commonly used as a sub-base under asphalt or concrete roads and driveways, as well as under concrete floors in basements and garages. These granulars are also used in various backfilling applications such as sewer/water main pipe backfill and foundation/retaining wall backfill.



6.7mm clear stone is used in the manufacturing of concrete block, paving stones, and precast panels or walls. It is also used in backfill applications such as cover for sewer/water main pipes.

The property was assembled in the late 1960's. It consists of 260 hectares (642 acres). 79 hectares (195 acres) on the north side of Watts Pond Road and 181 hectares (447 acres) on the south side.

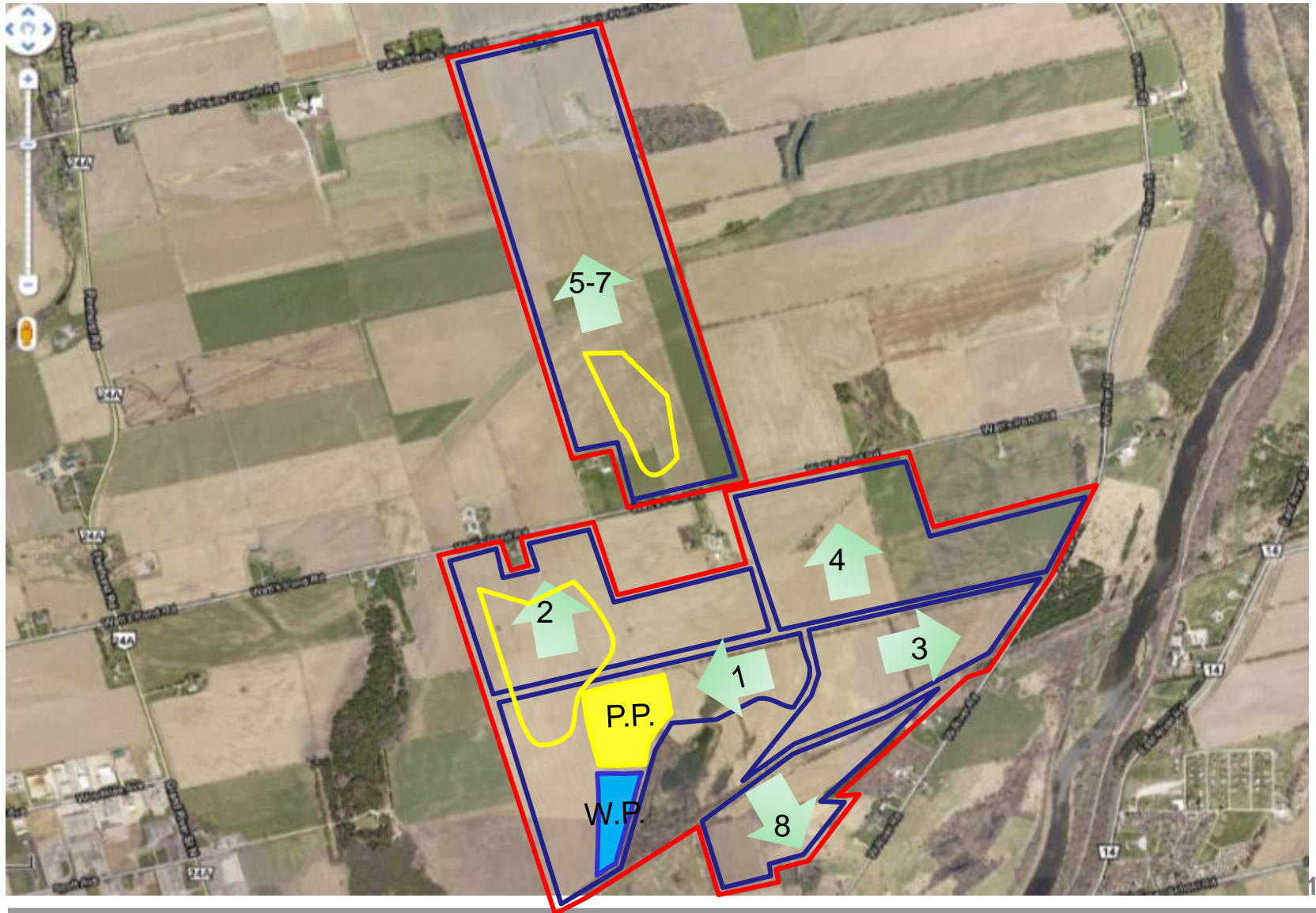
Licence Boundary

Below water Extraction

Processing Area

1
Direction of Extraction & Phasing

Dufferin Aggregates



Extraction will commence in the South West corner of the property, as indicated on the approved site plans.

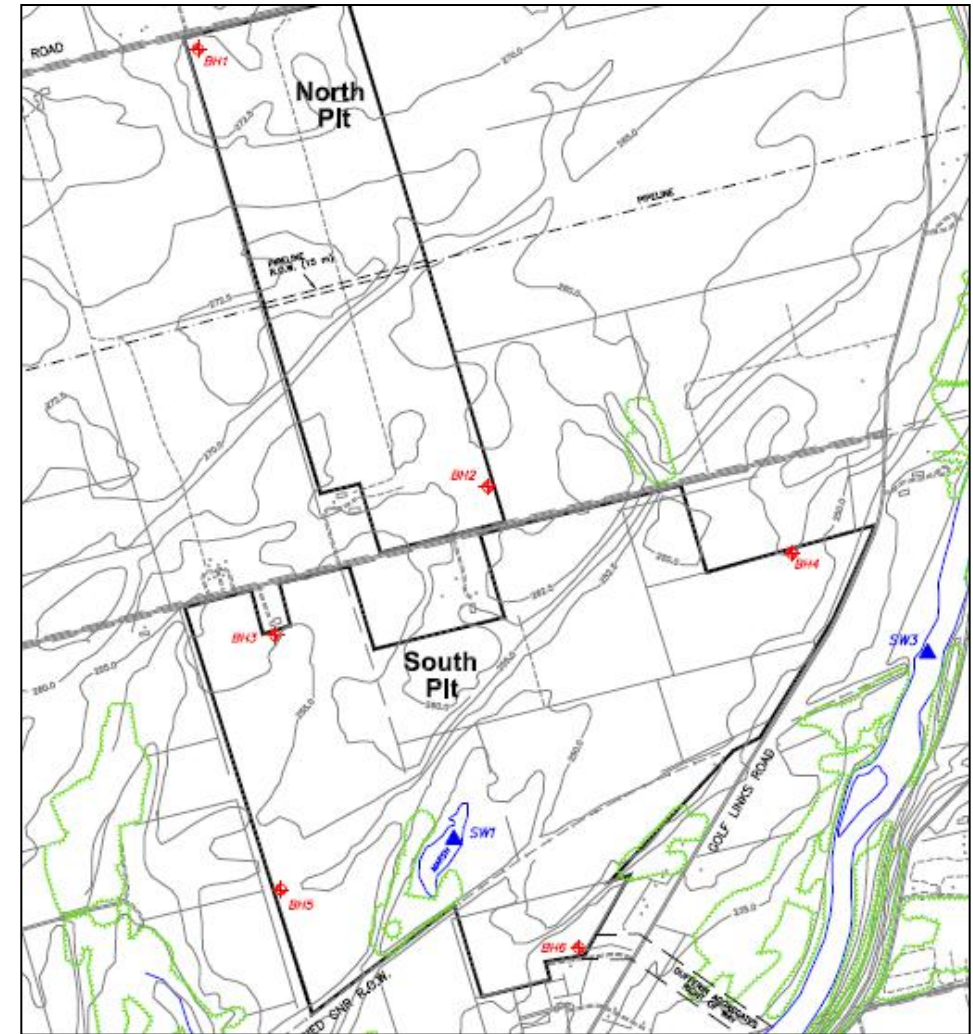
- Portable processing equipment will be used until a footprint for a more permanent plant is established.
- Processing shall be during regular daytime hours (7am – 7pm).
- Aggregate washing is required to produce concrete and asphalt products.



Water monitoring has been taking place around the pit property since the 1980's. All information is currently, and will continue to be, shared with the County.

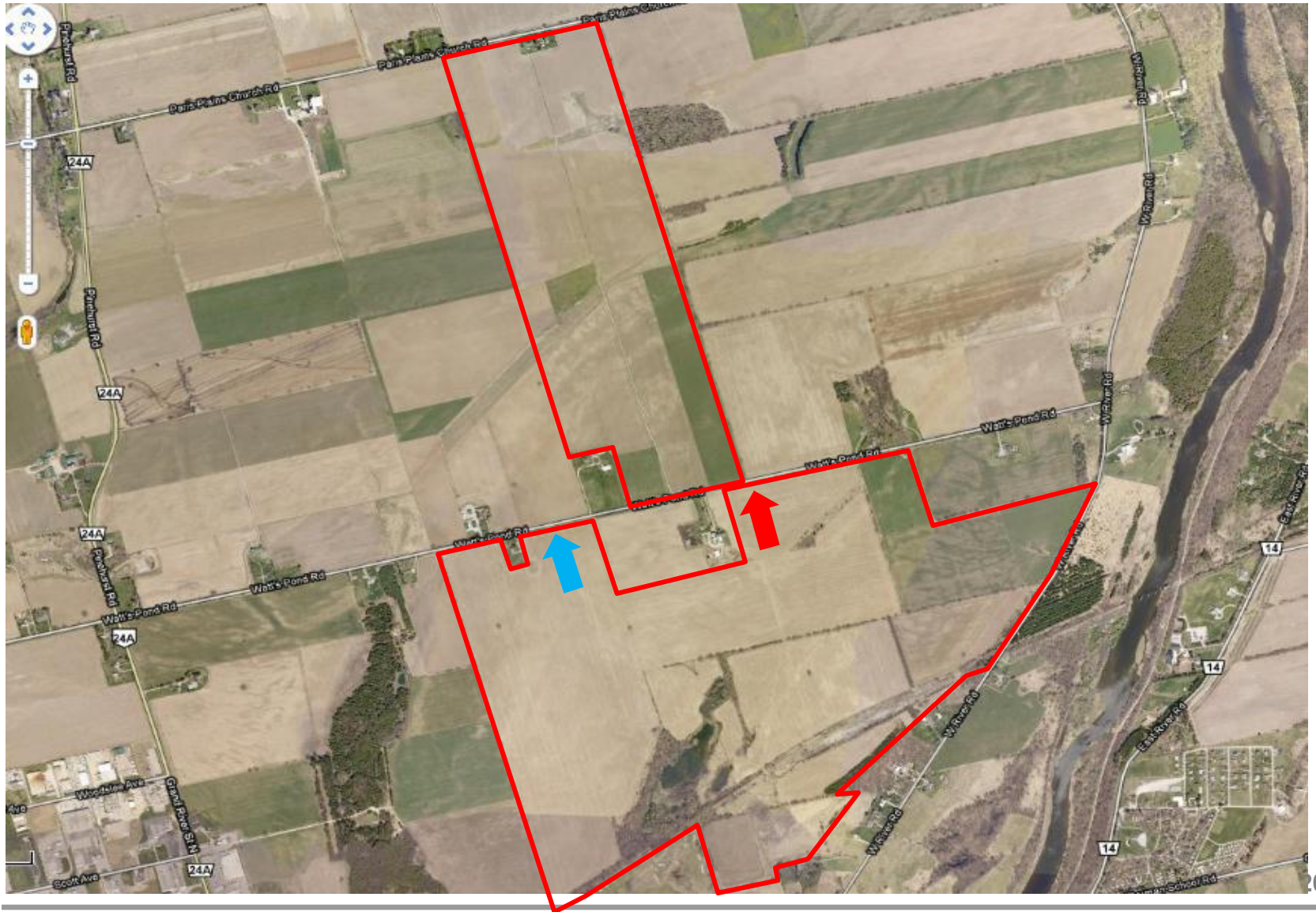
Monitoring Well Network

- Therefore good baseline data exists and it is recognized that the groundwater table in this area fluctuates due to seasonal variations.
- Monitoring of groundwater levels and water quality will continue. This will ensure that **extraction does not impact** surrounding domestic or municipal wells.

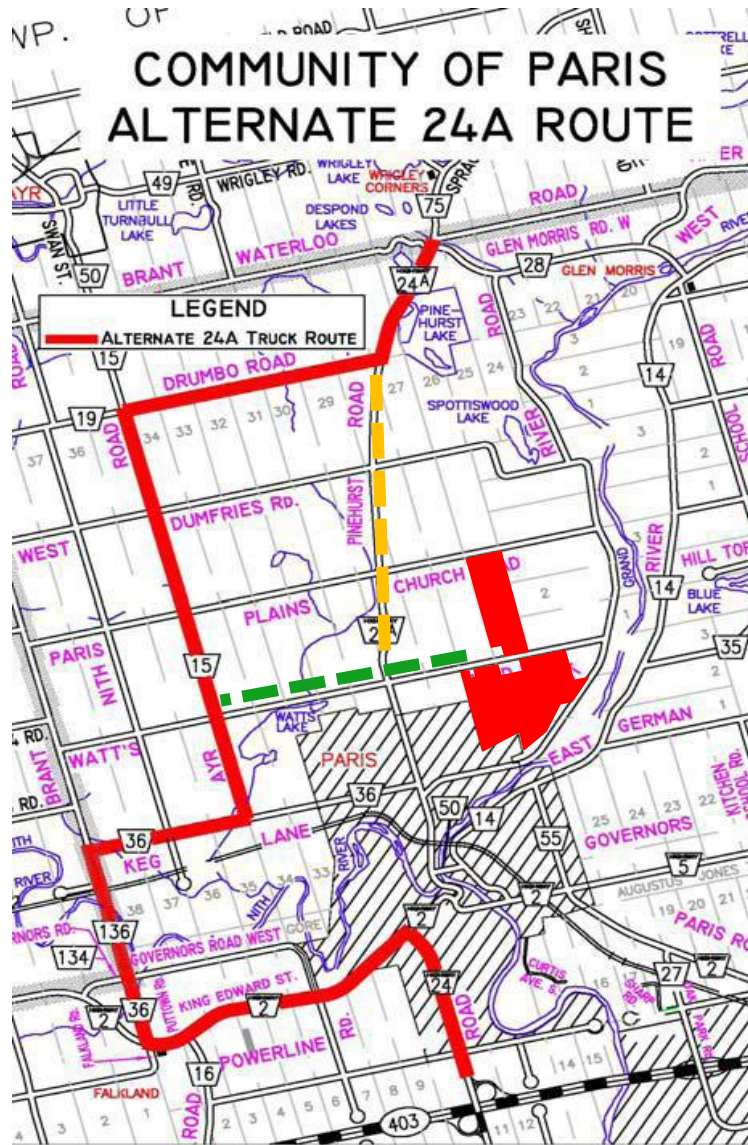


We are proposing to move the entrance to minimize the number of neighbours our haulers will pass

- ➔ Approved Location
- ➔ Proposed Location



Dufferin will use the County approved haul route. Timing for the road improvement work to be completed by Dufferin is at the call of the County.



- Dufferin is committed to improving Watt's Pond Road from the pit entrance to Hwy 24A.
 - ▶ The required improvements will be part of the County's Road improvement program.
- During half-load periods, trucks will not use half load roads; rerouting up Highway 24A to the Bypass and then down and around.

Dufferin will operate the site based on **TODAY'S standards.**

Discussion will continue with the community so that the extraction plan, monitoring regime, progressive rehabilitation plan and approach to community engagement will ensure a balance between community, environmental and economic objectives.

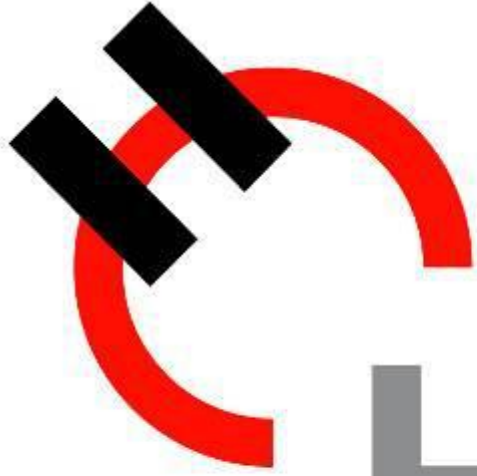


Questions and General Discussion

- Next Steps
 - ▶ Future Meetings
 - Given the number of topics of interest to the community, suggest several dates are scheduled in the coming months
 - Tuesday, May 15th
 - Tuesday, June 12th or 19th
 - ▶ Input on Draft Terms of Reference
 - Please send Courtney by April 30th, 2012
 - ▶ Please confirm that you intend to be a regular member of the Paris CAP
 - ▶ Please verify that we have your correct contact information
- Questions?

Thank You! Follow us on:





Holcim